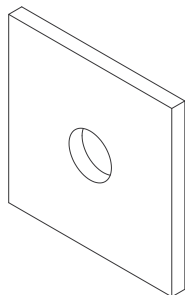


RUS 40

Square washer



Hot-dip galvanized, according to BS 729 (DIN EN ISO 1461)

Product	H	B	Ø	t	G
RUS 40-L7F	40 mm	40 mm	7 mm	4,0 mm	0,0188 kg
RUS 40-L9F	40 mm	40 mm	9 mm	4,0 mm	0,0185 kg

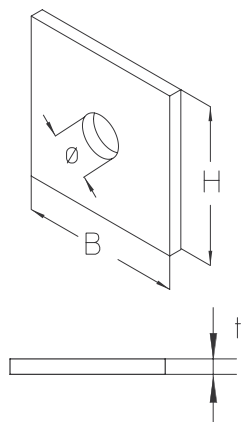
Stainless steel, according to ASTM 304 / BS 304 S 3

Product	H	B	Ø	t	G
RUS 40-L7E	40 mm	40 mm	7 mm	4,0 mm	0,0170 kg
RUS 40-L9E	40 mm	40 mm	9 mm	4,0 mm	0,0167 kg

- H:** Height
- B:** Width
- Ø** : Diameter
- t** : Material thickness
- G:** Weight



DETAILS / APPLICATIONS



OPTIONAL ACCESSORIES



System E30 - E90. CNBOP-PIB nr CNBOP-PIB-KOT-2017/0013-3703

