

US 9021

Square washer, DIN 9021



Galvanized, according to ISO 4042

Product	D	Ø	t	G
US 6X18	18 mm	6,40 mm	1,60 mm	0,30 kg/100
US 8X25	25 mm	8,40 mm	2,00 mm	0,70 kg/100
US 10X30	30 mm	10,50 mm	2,50 mm	1,20 kg/100
US 13X40	40 mm	13,00 mm	3,00 mm	2,70 kg/100

Hot-dip galvanized, according to BS 729 (DIN EN ISO 1461)

Product	D	Ø	t	G
US 10X30F	30 mm	10,50 mm	2,50 mm	1,20 kg/100
US 13X40F	40 mm	13,00 mm	3,00 mm	2,70 kg/100

Stainless steel, according to ASTM 304 / BS 304 S 3

Product	D	Ø	t	G
US 6X18E	18 mm	6,40 mm	1,60 mm	0,30 kg/100
US 8X25E	25 mm	8,40 mm	2,00 mm	0,70 kg/100
US 10X30E	30 mm	10,50 mm	2,50 mm	1,20 kg/100

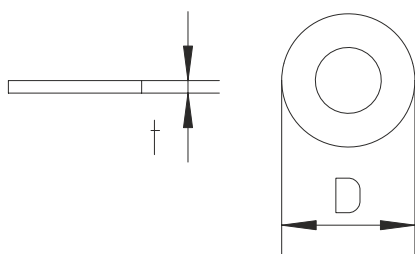


Stainless steel, according to ASTM 316 Ti / AISI 316 L, BS 320S17 / BS 316S11

Product	D	Ø	t	G
US 8X25E4	25 mm	8,40 mm	2,00 mm	0,70 kg/100
US 10X30E4	30 mm	10,50 mm	2,50 mm	1,20 kg/100

D : Diameter
Ø : Diameter
t : Material thickness
G : Weight

DETAILS / APPLICATIONS



System E30 - E90. CNBOP-PIB nr CNBOP-PIB-KOT-2017/0013-3703

