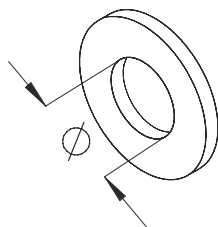


US 125

Square washer, DIN 125



Galvanized, according to ISO 4042

Product	D	Ø	t	G
US 6X12	12,5 mm	6,40 mm	1,60 mm	0,1 kg/100
US 8X17	17,0 mm	8,40 mm	2,00 mm	0,2 kg/100
US 10X21	21,0 mm	10,50 mm	2,00 mm	0,4 kg/100
US 13X24	24,0 mm	13,00 mm	2,50 mm	0,6 kg/100
US 17X30	30,0 mm	17,00 mm	3,00 mm	1,1 kg/100

Hot-dip galvanized, according to BS 729 (DIN EN ISO 1461)

Product	D	Ø	t	G
US 10x21F	21,0 mm	10,50 mm	2,00 mm	0,4 kg/100
US 13x24F	24,0 mm	13,00 mm	2,50 mm	0,6 kg/100
US 17x30F	30,0 mm	17,00 mm	3,00 mm	1,1 kg/100

Stainless steel, according to ASTM 304 / BS 304 S 3

Product	D	Ø	t	G
US 6X12E	12,5 mm	6,40 mm	1,50 mm	0,1 kg/100
US 8X17E	17,0 mm	8,40 mm	1,50 mm	0,2 kg/100
US 10X21E	21,0 mm	10,50 mm	2,00 mm	0,4 kg/100
US 13X24E	24,0 mm	13,00 mm	2,50 mm	1,2 kg/100

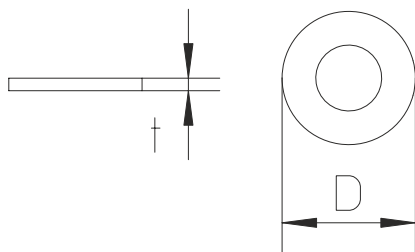


Stainless steel, according to ASTM 316 Ti / AISI 316 L, BS 320S17 / BS 316S11

Product	D	Ø	t	G
US 6X12E4	12,5 mm	6,40 mm	1,50 mm	0,1 kg/100
US 10x21E4	21,0 mm	10,5 mm	1,50 mm	0,2 kg/100
US 8x17E4	17,0 mm	8,4 mm	1,50 mm	0,2 kg/100

D : Diameter
Ø : Diameter
t : Material thickness
G : Weight

DETAILS / APPLICATIONS



System E30 - E90. CNBOP-PIB nr CNBOP-PIB-KOT-2017/0013-3703

