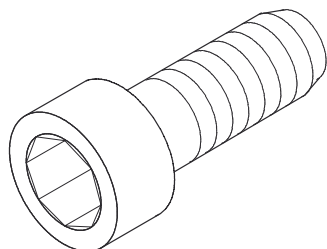


## IK

Hexagon socket head screw, DIN 912



### Galvanized, according to ISO 4042

Product	L	D	Ø	IK	G
IK 6X20	20 mm	10,20 mm	6 mm	5 mm	0,70 kg/100
IK 8X20	20 mm	13,30 mm	8 mm	6 mm	1,30 kg/100
IK 8X25	25 mm	13,30 mm	8 mm	6 mm	1,50 kg/100
IK 8X30	30 mm	13,30 mm	8 mm	6 mm	1,70 kg/100
IK 8X40	40 mm	13,30 mm	8 mm	6 mm	2,10 kg/100
IK 10X20	20 mm	16,30 mm	10 mm	8 mm	2,30 kg/100
IK 10X25	25 mm	16,30 mm	10 mm	8 mm	2,50 kg/100
IK 10X30	30 mm	16,30 mm	10 mm	8 mm	2,80 kg/100
IK 10X40	40 mm	16,30 mm	10 mm	8 mm	3,30 kg/100
IK 12X20	20 mm	18,30 mm	12 mm	10 mm	3,20 kg/100
IK 12X25	25 mm	18,30 mm	12 mm	10 mm	3,60 kg/100
IK 12X30	30 mm	18,30 mm	12 mm	10 mm	3,90 kg/100
IK 12X40	40 mm	18,30 mm	12 mm	10 mm	4,70 kg/100
IK 12X50	50 mm	18,30 mm	12 mm	10 mm	5,50 kg/100

### Stainless steel, according to ASTM 304 / BS 304 S 3

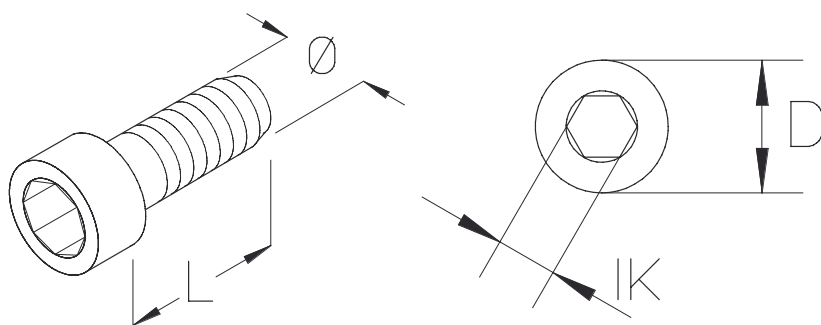
Product	L	D	Ø	IK	G
IK 8X10E	10 mm	13,30 mm	8 mm	6 mm	1,00 kg/100
IK 8X20E	20 mm	13,30 mm	8 mm	6 mm	1,30 kg/100



Product	L	D	Ø	IK	G
IK 8X25E	25 mm	13,30 mm	8 mm	6 mm	1,30 kg/100
IK 8X30E	30 mm	13,30 mm	8 mm	6 mm	1,70 kg/100
IK 8X40E	40 mm	13,30 mm	8 mm	6 mm	2,10 kg/100
IK 8X50E	50 mm	13,30 mm	8 mm	6 mm	2,50 kg/100
IK 10X20E	20 mm	16,30 mm	10 mm	8 mm	2,30 kg/100
IK 10X25E	25 mm	16,30 mm	10 mm	8 mm	2,50 kg/100
IK 10X30E	30 mm	16,30 mm	10 mm	8 mm	2,80 kg/100
IK 10X40E	40 mm	16,30 mm	10 mm	8 mm	3,30 kg/100
IK 12X20E	20 mm	18,30 mm	12 mm	10 mm	3,20 kg/100
IK 12X25E	25 mm	18,30 mm	12 mm	10 mm	3,60 kg/100
IK 12X30E	30 mm	18,30 mm	12 mm	10 mm	3,90 kg/100
IK 12X40E	40 mm	18,30 mm	12 mm	10 mm	4,70 kg/100
IK 12X50E	50 mm	18,30 mm	12 mm	10 mm	5,50 kg/100

- L** : Length
- D** : Diameter
- Ø** : Diameter
- IK** : Internal hexagon
- G** : Weight

## DETAILS / APPLICATIONS



System E30 - E90. CNBOP-PIB nr CNBOP-PIB-KOT-2017/0013-3703

