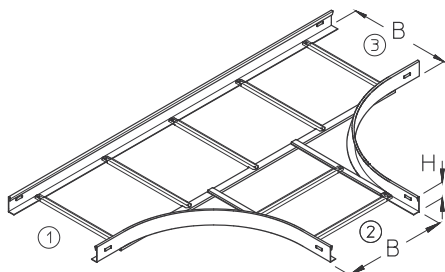


LA 60

Cable ladder branch-piece, height=60 mm



Cable ladder branch, formed component as T-piece.
Riveted rungs. Fittings are also available in an angular shape.
① , ② , ③ , can have other dimensions.

This article is available made in material No. 1.4571/1.4404 (V4A) stainless steel finish.



Continuously hot galvanized (Sendzimir process) (DIN EN 10346)

Product	H	B	R	G
LA 60-10S	60 mm	100 mm	400 mm	4,07 kg
LA 60-20S	60 mm	200 mm	400 mm	4,62 kg
LA 60-30S	60 mm	300 mm	400 mm	5,13 kg
LA 60-40S	60 mm	400 mm	400 mm	5,64 kg
LA 60-50S	60 mm	500 mm	400 mm	6,36 kg
LA 60-60S	60 mm	600 mm	400 mm	6,92 kg

Hot-dip galvanized, according to BS 729 (DIN EN ISO 1461)

Product	H	B	R	G
LA 60-10F	60 mm	100 mm	400 mm	4,48 kg
LA 60-20F	60 mm	200 mm	400 mm	5,08 kg
LA 60-30F	60 mm	300 mm	400 mm	5,64 kg
LA 60-40F	60 mm	400 mm	400 mm	6,21 kg
LA 60-50F	60 mm	500 mm	400 mm	7,00 kg
LA 60-60F	60 mm	600 mm	400 mm	7,61 kg

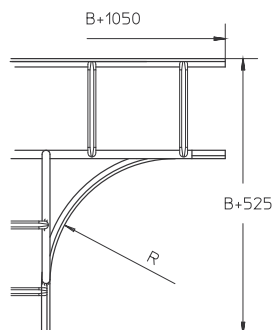


Stainless steel, according to ASTM 304 / BS 304 S 3

Product	H	B	R	G
LA 60-10E	60 mm	100 mm	400 mm	4,07 kg
LA 60-20E	60 mm	200 mm	400 mm	4,62 kg
LA 60-30E	60 mm	300 mm	400 mm	5,13 kg
LA 60-40E	60 mm	400 mm	400 mm	5,64 kg
LA 60-50E	60 mm	500 mm	400 mm	6,36 kg
LA 60-60E	60 mm	600 mm	400 mm	6,92 kg

H : Height
B : Width
R : Radius
G : Weight

DETAILS / APPLICATIONS



OPTIONAL ACCESSORIES

LGV 60, LGVH 60, LGW 60, KLU



System E30 - E90. CNBOP-PIB nr CNBOP-PIB-KOT-2017/0013-3703

