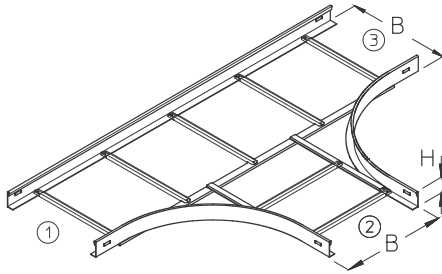


## LA 100

Cable ladder branch-piece, height=100 mm



Cable ladder branch, formed component as T-piece.  
Riveted rungs. Fittings are also available in an angular shape.  
①, ②, ③, can have other dimensions.

This article is available made in material No. 1.4571/1.4404 (V4A) stainless steel finish.

**Continuously hot galvanized (Sendzimir process) (DIN EN 10346)**

Product	H	B	R	G
LA 100-10S	100 mm	100 mm	400 mm	5,25 kg
LA 100-20S	100 mm	200 mm	400 mm	5,83 kg
LA 100-30S	100 mm	300 mm	400 mm	6,38 kg
LA 100-40S	100 mm	400 mm	400 mm	6,94 kg
LA 100-50S	100 mm	500 mm	400 mm	7,70 kg
LA 100-60S	100 mm	600 mm	400 mm	8,29 kg

**Hot-dip galvanized, according to BS 729 (DIN EN ISO 1461)**

Product	H	B	R	G
LA 100-10F	100 mm	100 mm	400 mm	5,77 kg
LA 100-20F	100 mm	200 mm	400 mm	6,41 kg
LA 100-30F	100 mm	300 mm	400 mm	7,02 kg
LA 100-40F	100 mm	400 mm	400 mm	7,63 kg
LA 100-50F	100 mm	500 mm	400 mm	8,47 kg
LA 100-60F	100 mm	600 mm	400 mm	9,12 kg

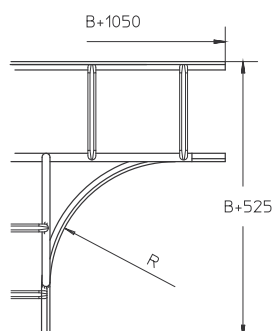


Stainless steel, according to ASTM 304 / BS 304 S 3

Product	H	B	R	G
LA 100-10E	100 mm	100 mm	400 mm	5,25 kg
LA 100-20E	100 mm	200 mm	400 mm	5,83 kg
LA 100-30E	100 mm	300 mm	400 mm	6,38 kg
LA 100-40E	100 mm	400 mm	400 mm	6,94 kg
LA 100-50E	100 mm	500 mm	400 mm	7,70 kg
LA 100-60E	100 mm	600 mm	400 mm	8,29 kg

**H** : Height  
**B** : Width  
**R** : Radius  
**G** : Weight

## DETAILS / APPLICATIONS



## OPTIONAL ACCESSORIES

LGV 100, LGVH 100, LGVV 100, KLU

