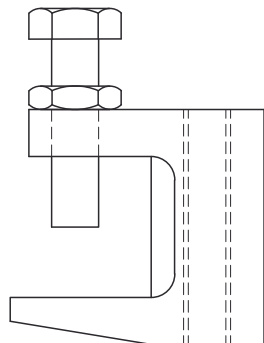


U-551, U-552, U-553

I-beam clamp

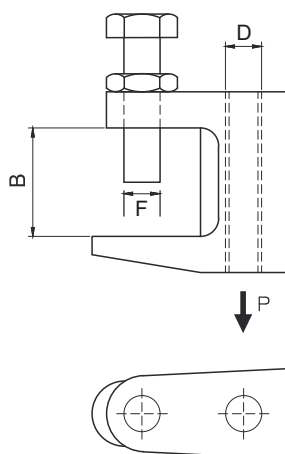


Zinc coated

Product	B	Ø D	Ø F	P _{max}	G
U-551	18 mm	8 mm	8 mm	1,20 kN	0,081 kg
U-552	23 mm	8 mm	10 mm	2,50 kN	0,147 kg
U-553	20 mm	10 mm	10 mm	2,50 kN	0,143 kg

- B** : Width
- Ø D** : Diameter
- Ø F** : Diameter
- P_{max}** : Maximum load
- G** : Weight

DETALE / ZASTOSOWANIE





OPTIONAL ACCESSORIES

HFEF8EXP 2, HFEF8 3, HFEF10EXP 2, HFEF10 3, GB



System E30 - E90. CNBOP-PIB

