

RVB 35

Cable tray vertical bend, height=35 mm

Cable tray vertical bend for flexible vertical change of direction.

This article is available made in material No. 1.4571/1.4404 (V4A) stainless steel finish.



Continuously hot galvanized (Sendzimir process) (DIN EN 10346)

Product	H	B	R	G
RVB 35-05S	35 mm	50 mm	280 mm	1,08 kg
Incl.: 2x KLR		Clamp fastening set		
RVB 35-10S	35 mm	100 mm	280 mm	1,21 kg
Incl.: 2x KLR		Clamp fastening set		
RVB 35-20S	35 mm	200 mm	280 mm	1,48 kg
Incl.: 2x KLR		Clamp fastening set		
RVB 35-30S	35 mm	300 mm	280 mm	1,76 kg
Incl.: 2x KLR		Clamp fastening set		

Hot-dip galvanized, according to BS 729 (DIN EN ISO 1461)

Product	H	B	R	G
RVB 35-05F	35 mm	50 mm	280 mm	1,20 kg
Incl.: 2x KLR E		Clamp fastening set		
RVB 35-10F	35 mm	100 mm	280 mm	1,36 kg
Incl.: 2x KLR E		Clamp fastening set		



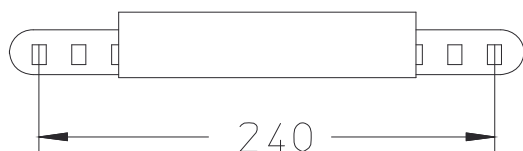
RVB 35-20F	35 mm	200 mm	280 mm	1,66 kg
Incl.:				
2x KLR E		Clamp fastening set		
RVB 35-30F	35 mm	300 mm	280 mm	1,97 kg
Incl.:				
2x KLR E		Clamp fastening set		

Stainless steel, according to ASTM 304 / BS 304 S 3

Product	H	B	R	G
RVB 35-05E	35 mm	50 mm	280 mm	1,08 kg
Incl.:				
2x KLR E		Clamp fastening set		
RVB 35-10E	35 mm	100 mm	280 mm	1,21 kg
Incl.:				
2x KLR E		Clamp fastening set		
RVB 35-20E	35 mm	200 mm	280 mm	1,48 kg
Incl.:				
2x KLR E		Clamp fastening set		
RVB 35-30E	35 mm	300 mm	280 mm	1,76 kg
Incl.:				
2x KLR E		Clamp fastening set		

H : Height
B : Width
R : Radius
G : Weight

DETAILS / APPLICATIONS



OPTIONAL ACCESSORIES

REB





UL classified

